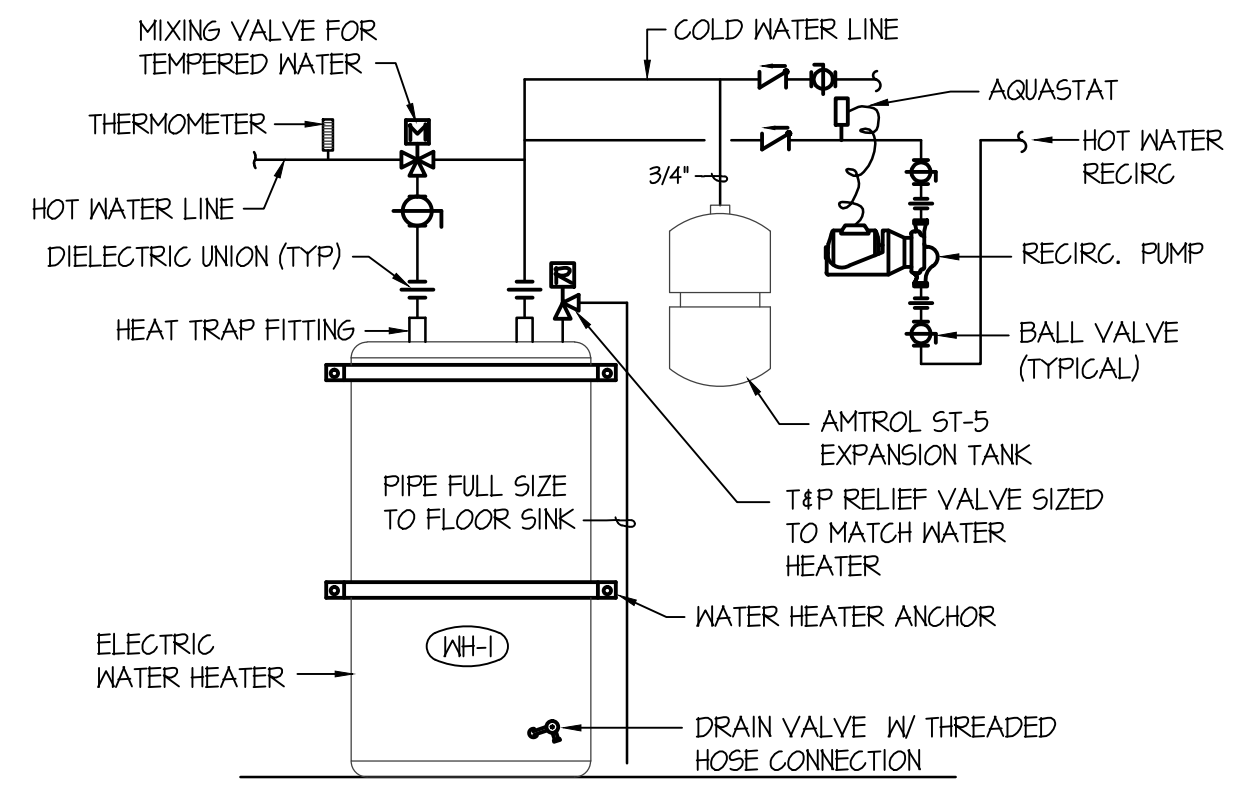


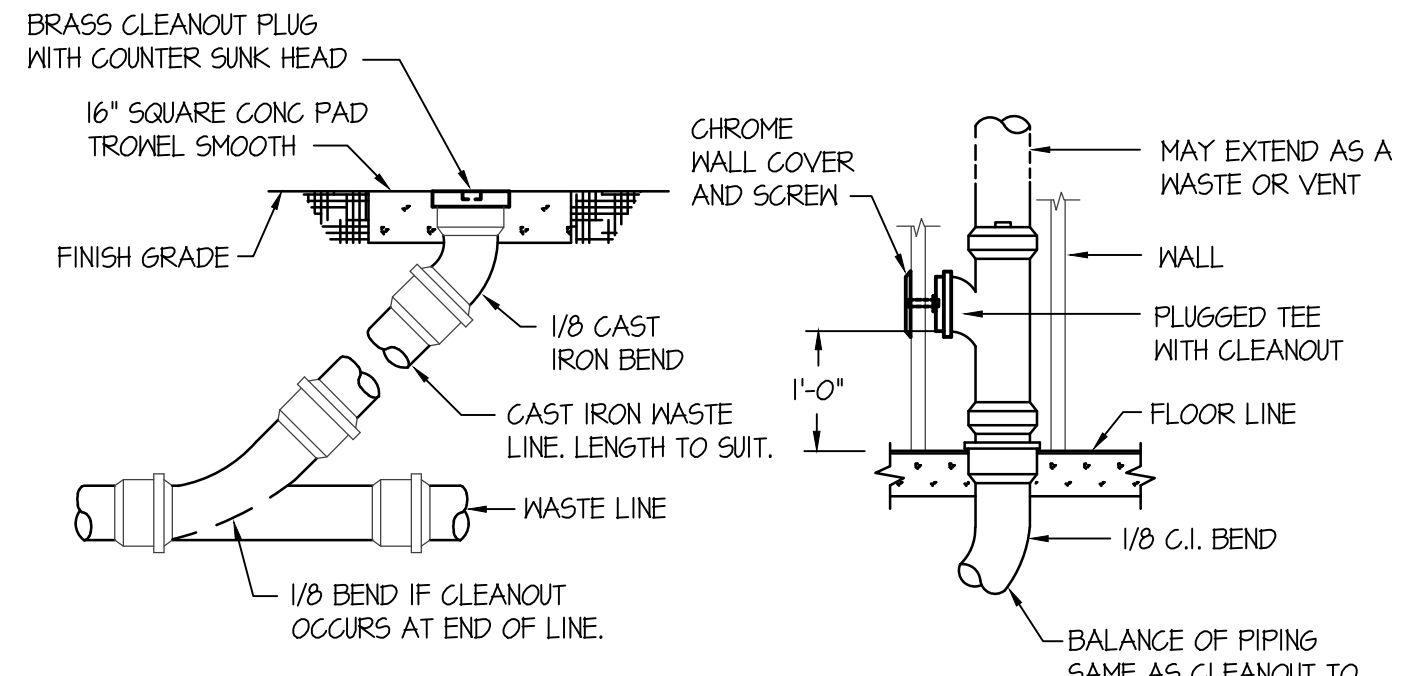
- WET RISER DETAIL NOTES**
- 1 6" WATER SUPPLY FROM CITY WATER MAIN. USE CLASS 53 DUCTILE IRON WHEN CROSSING UNDER BLDG FOUNDATION.
 - 2 USE FLEXIBLE GROOVED PIPE COUPLING ONLY IF SEISMIC BRACING IS REQUIRED. SEE NOTE #12.
 - 3 GROOVED BUTTERFLY VALVE WITH INTEGRAL SUPERVISORY SWITCH.
 - 4 DOUBLE CHECK BACKFLOW PREVENTER WITH RELATED TRIM AND GAUGES.
 - 5 3-1/2" DIAMETER WATER GAUGE WITH 1/4" TEST AND ISOLATION VALVE.
 - 6 VANE TYPE WATER FLOW SWITCH.
 - 7 SUPPLY TO WET PIPE FIRE SPRINKLER SYSTEM.
 - 8 SWING CHECK VALVE.
 - 9 RISER MANIFOLD - INCLUDES PRESHURE GAUGE, FLOW SWITCH, PRESHURE RELIEF VALVE, AND TEST AND MAIN DRAIN DEVICE.
 - 10 INSPECTOR'S TEST & MAIN DRAIN DEVICE 11 - PIPE TO OUTSIDE.
 - 11 PRESHURE RELIEF VALVE SHALL BE REQUIRED SET AT 175 PSI - PIPED TO DISCHARGE OUTSIDE.
 - 12 SEISMIC BRACING REQUIRED IN SEISMIC DESIGN CATEGORY C, D, E, F.
 - 13 1/2" AUTOMATIC BALL DRIP VALVE.
 - 14 PIPE TO DRAIN OUTSIDE.
 - 15 WEATHERPROOF ELECTRIC BELL OR HORN AND STROBE (OUTSIDE).
 - 16 OUT TO FIRE DEPARTMENT CONNECTION WITH GALVANIZED SCH 40 PIPING - PROVIDE BALL DRIP WHEN TRAPPING PIPE. SIZE CONNECTION AS REQUIRED. NOTE: PIPE FDC TO REMOTE LOCATION ON STAKE BUILDINGS AND WHEN REQUIRED BY FIRE MARSHAL.
 - 17 GALVANIZED FLANGE AND SPOOL PIECE
 - 18 CLASS 53 D.I. FLANGED SPIGOT
 - 19 3/4" A.T.R.
 - 20 3/4" BENT EYE BOLT
 - 21 MECHANICAL JOINT 90° ELL
 - 22 CONCRETE THRUST BLOCK WITH 5 SQ. FEET BEARING AREA
 - 23 UNDISTURBED EARTH
 - 24 LOW TEMPERATURE SENSOR - MOUNTED ON WALL - THIS SWITCH IS PROVIDED UNDER DIVISION 28 OF THE SPECIFICATIONS.
 - 25 SPARE HEAD CABINET WITH SPARE SPRINKLER HEADS AND WRENCHES.
 - 26 LAMINATED SYSTEM MAP WITH SYSTEM START-UP AND SHUT-DOWN INSTRUCTIONS.

NOTE:
PROVIDE SLEEVES WHERE PIPING PENETRATES BUILDING AT FLOOR AND WALLS. SEAL AROUND PENETRATION WITH FLEXIBLE MASTIC AT FLOOR. PROVIDE 2" ANNULAR SPACE AROUND AND RESTRAIN FLANGE SPIGOT.

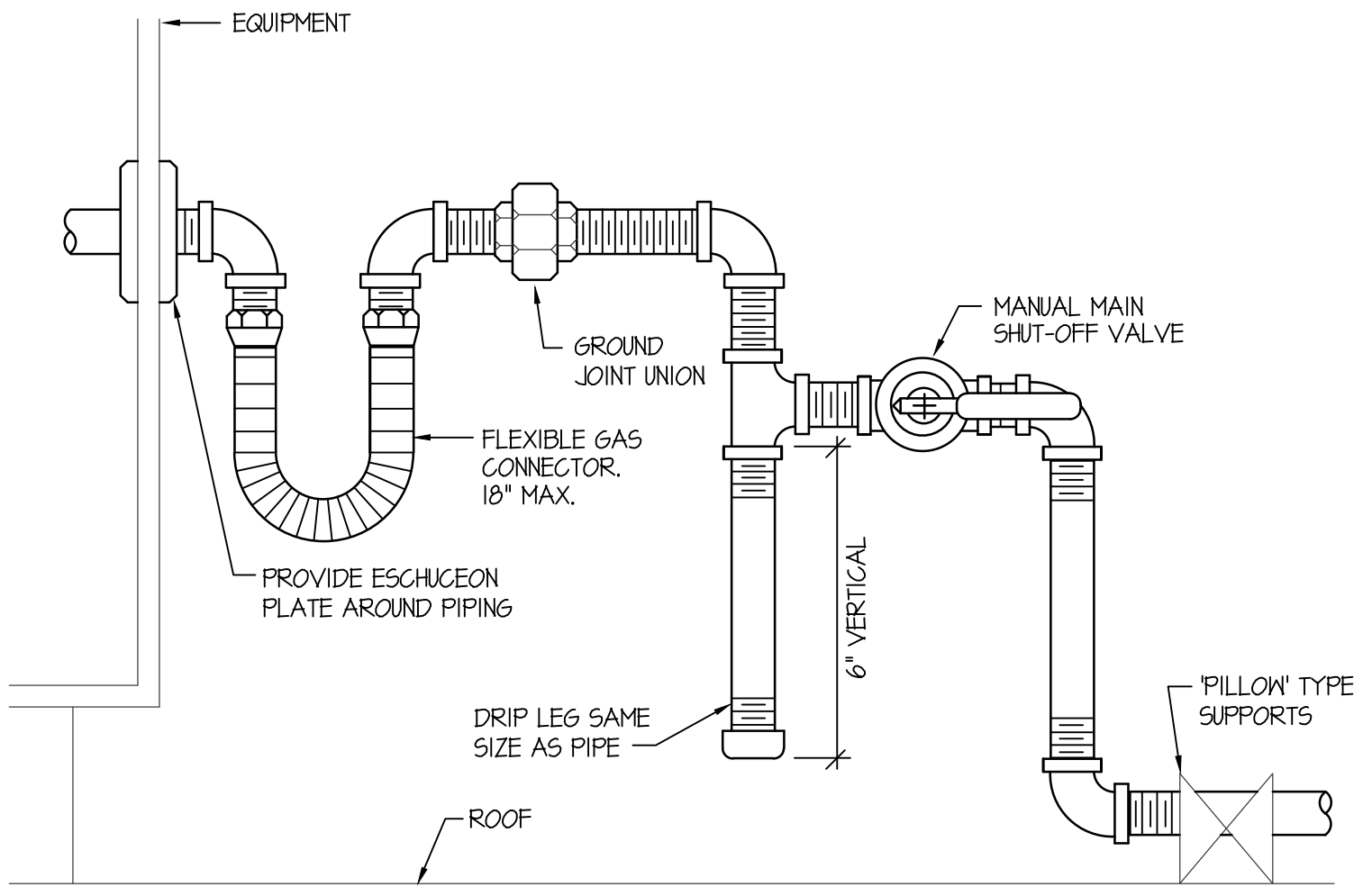
VERTICAL FIRE RISER DETAIL
NO SCALE



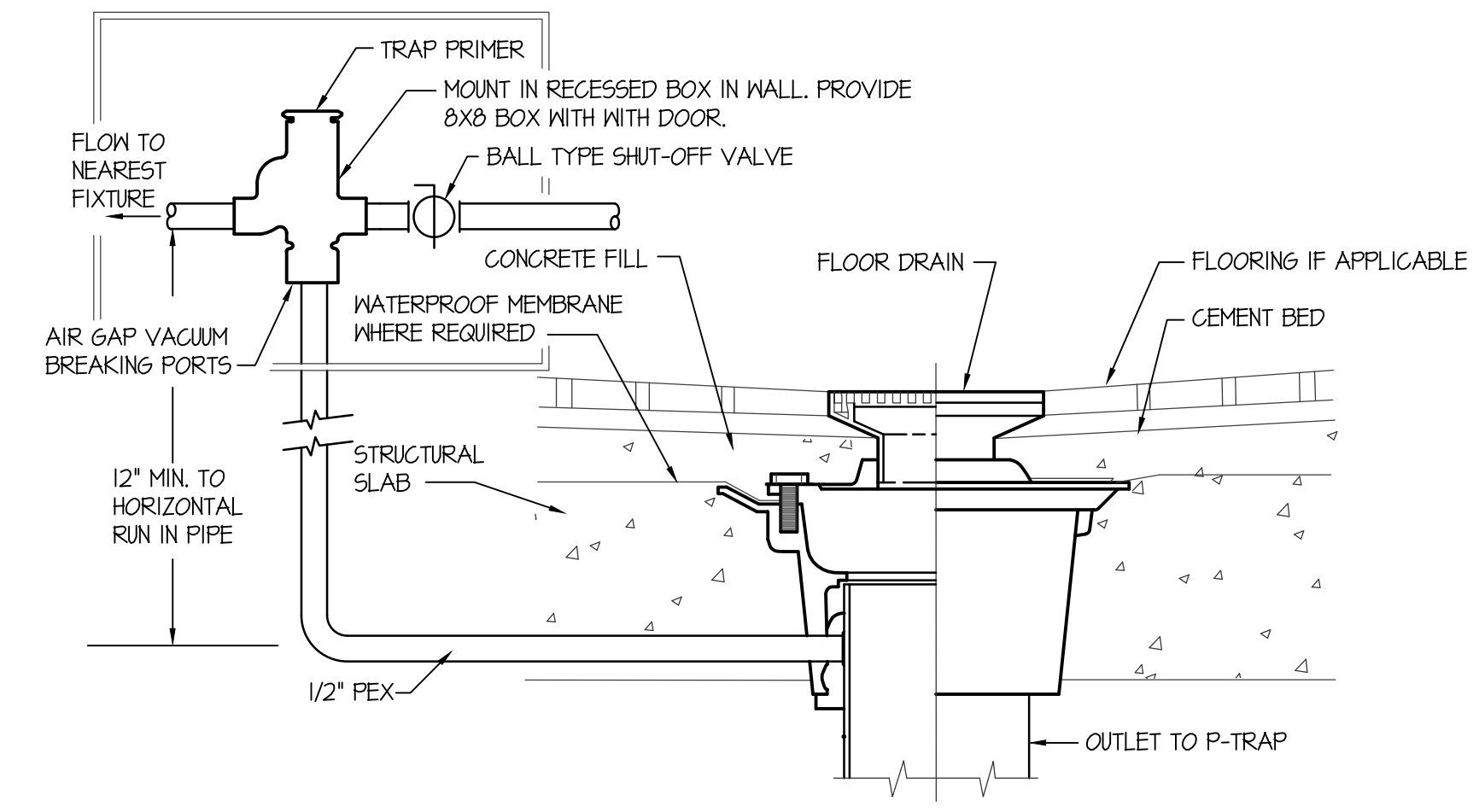
WATER HEATER WH-1 PIPING DETAIL
NO SCALE



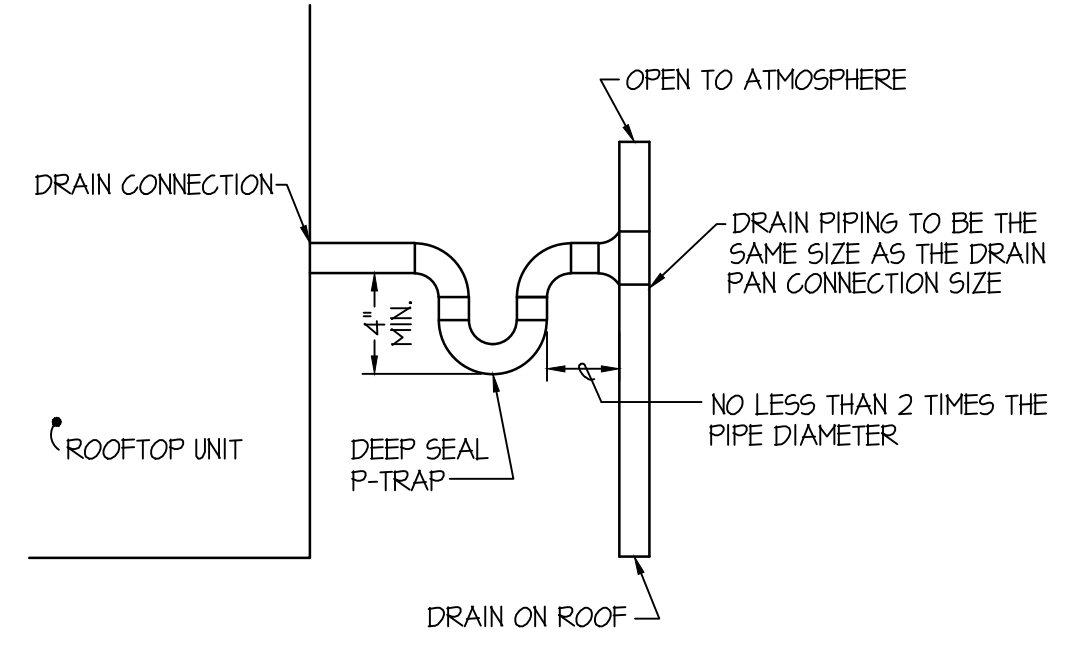
CLEAN OUT DETAILS
NO SCALE



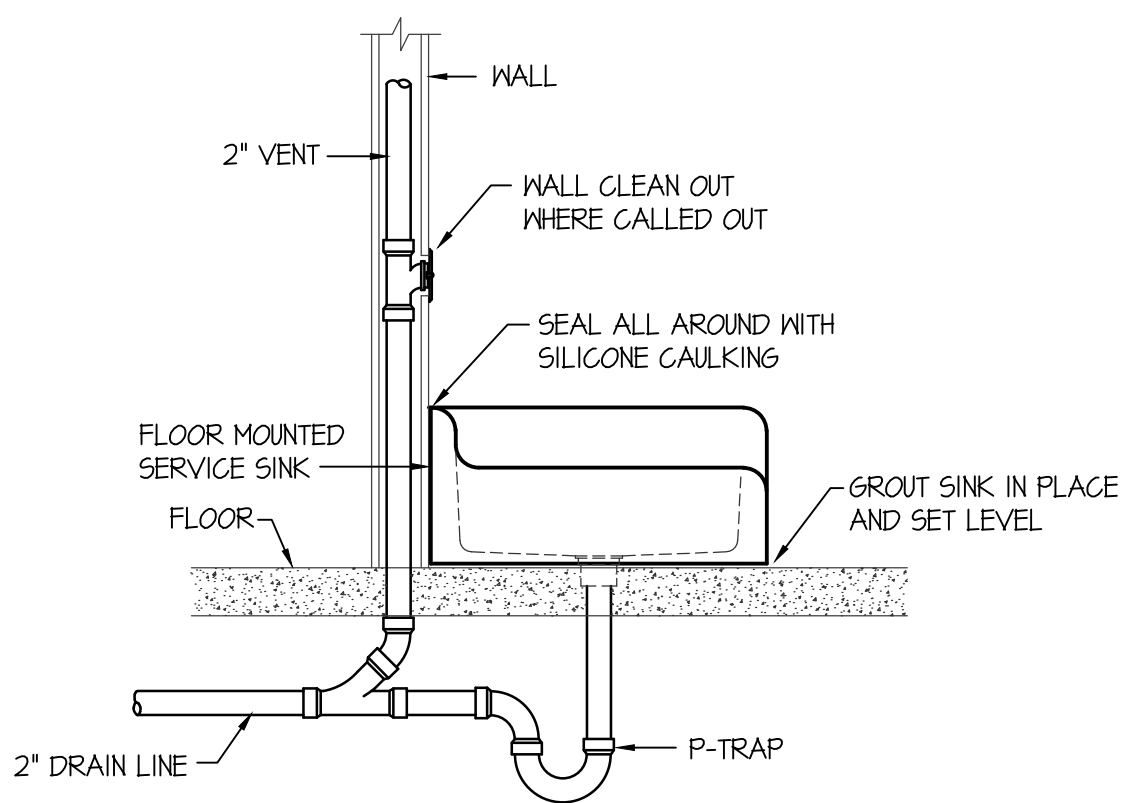
ROOFTOP UNIT GAS PIPING DETAIL
NO SCALE



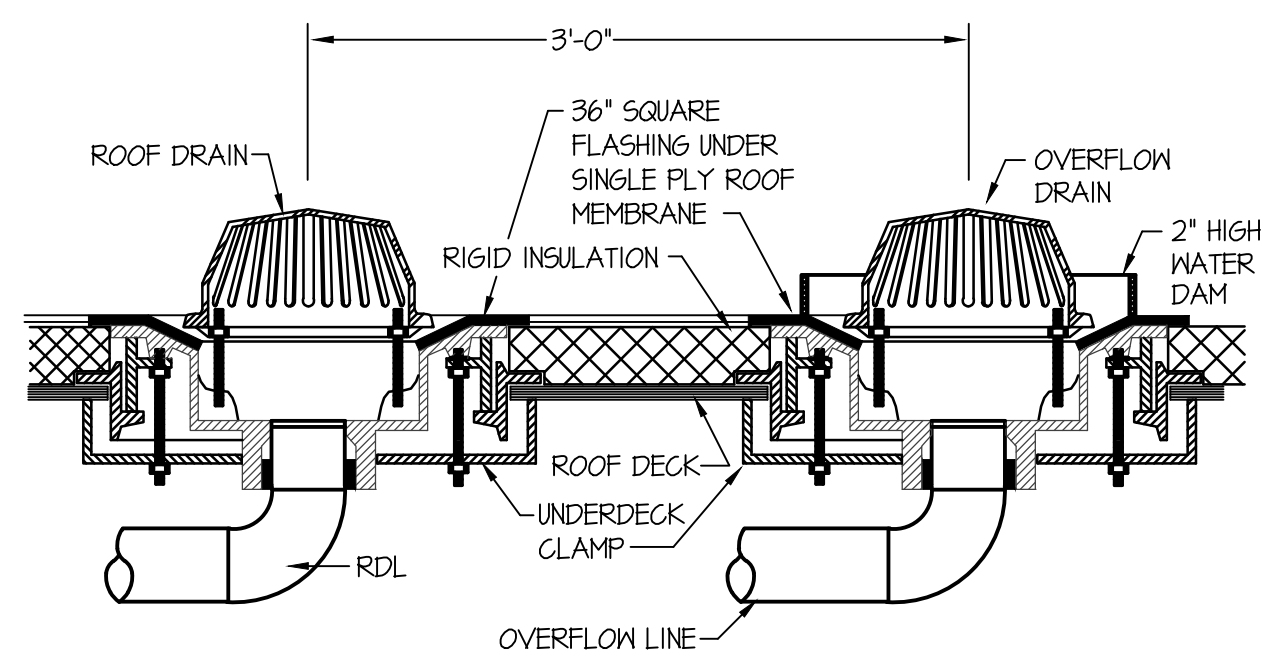
TRAP PRIMER DETAIL
NO SCALE



CONDENSATE DRAIN (ROOFTOP UNIT)
NO SCALE



SERVICE SINK INSTALLATION DETAIL
NO SCALE



ROOF DRAIN DETAIL
NO SCALE

ORIGINAL DRAWING SIGNED BY: DWAYNE C. SUDWEEKS
DATE ORIGINAL SIGNED: JAN. 9TH, 2019
ORIGINAL ON FILE AT ENGINEERED SYSTEMS ASSOCIATES
1355 EAST CENTER, POCATELLO, IDAHO 83201

Engineered Systems Associates
1355 EAST CENTER
POCATELLO, IDAHO 83201
PHONE: (208) 233-0501
FAX: (208) 233-0529
EMAIL: esa@engsystems.com
ESA JOB NUMBER: 18026

Professional Engineer Registered
5762
STATE OF IDAHO
DWAYNE C. SUDWEEKS

DRAWN BY: SR
CHECKED BY: DCS
JOB NUMBER: 46548-13B
PROJECT DATE: JAN, 2019
SHEET OF
P103